

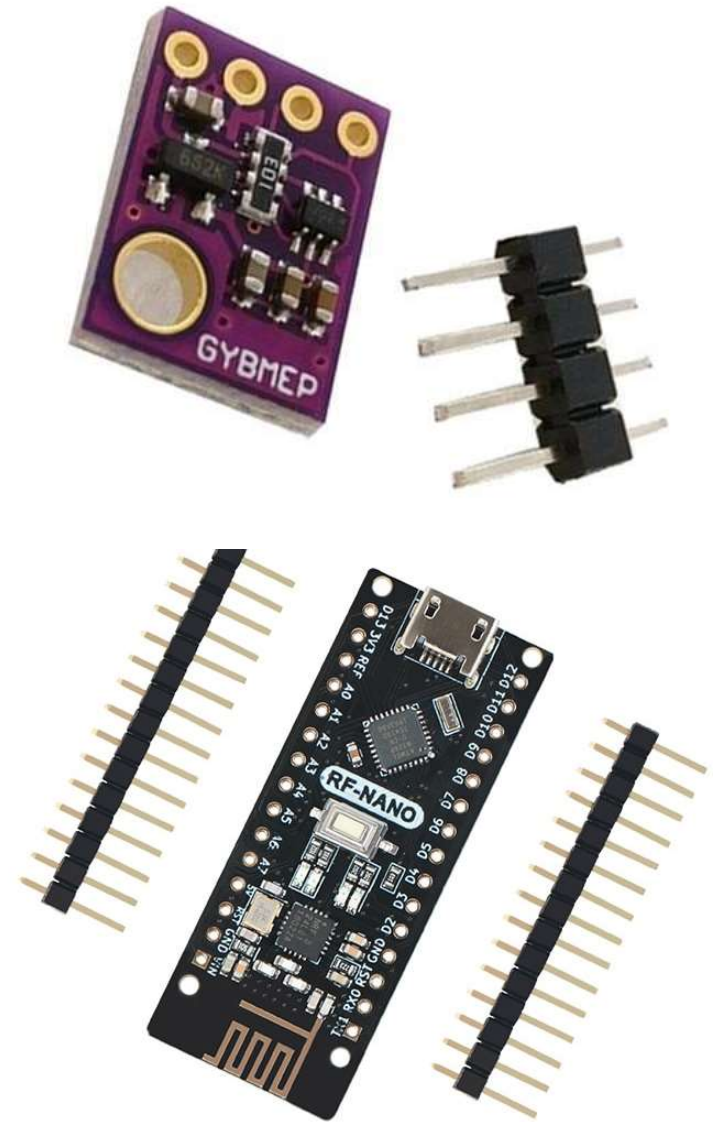
# Valpo SensorNet

Musical Instrument Microclimates

Daniel Piccoli

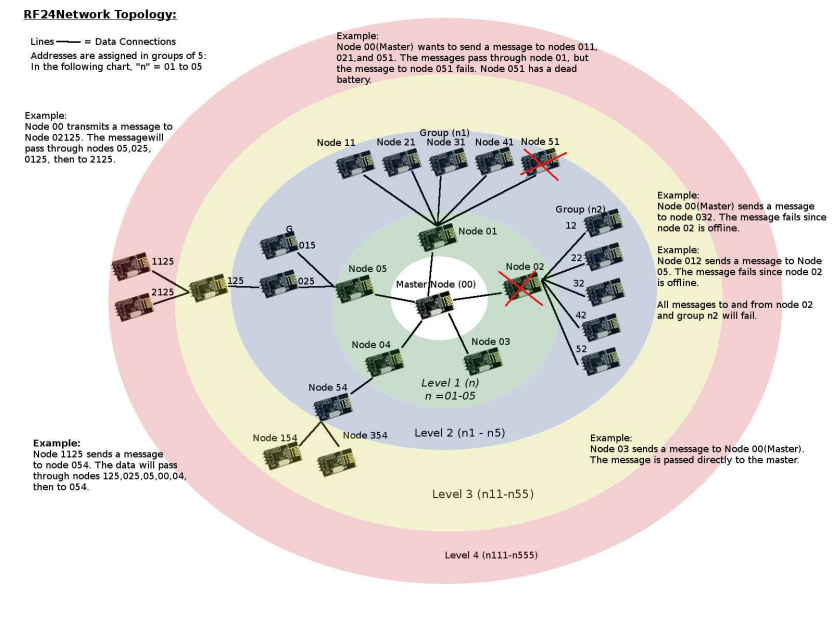
# Why measure climate?

- Environment can have huge effects on musical instruments
- Temperature, humidity mostly to cause
- Valparaiso University Chapel lacks climate control
  - Important to observe the effects of this



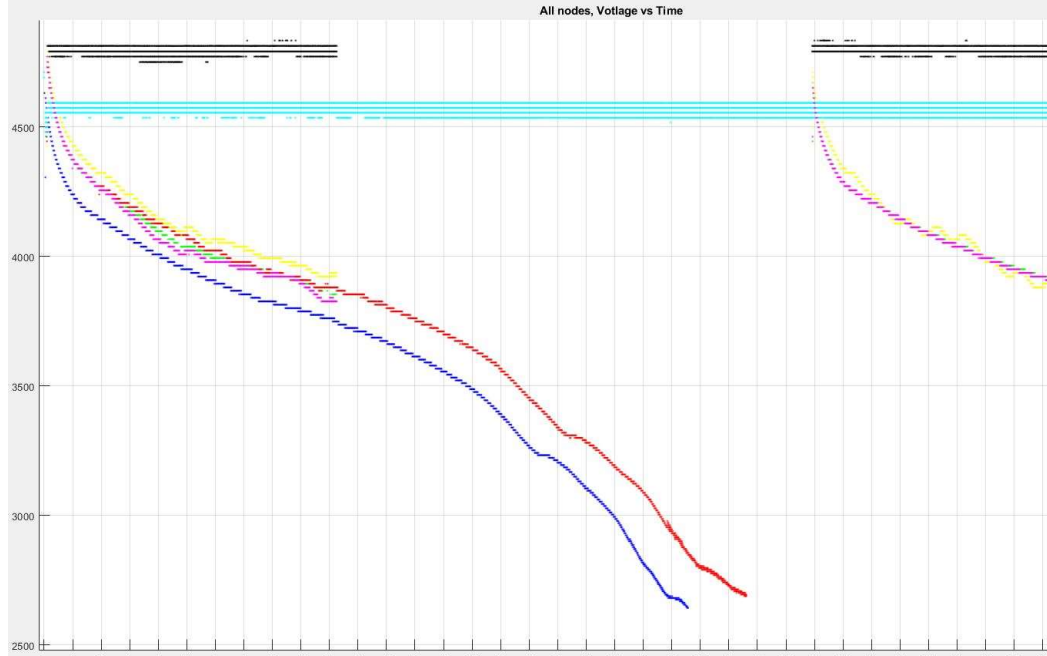
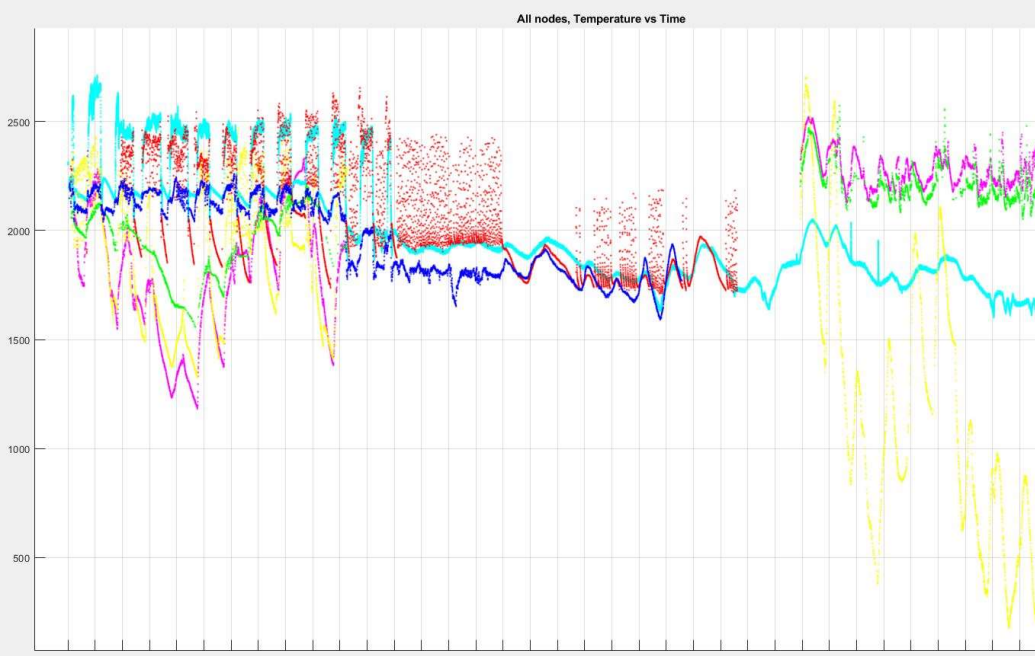
# How to Measure?

- Static vs “Dynamic” Topology
  - Dynamic Topology is excessive
- Static Topology gives greater sleep capabilities



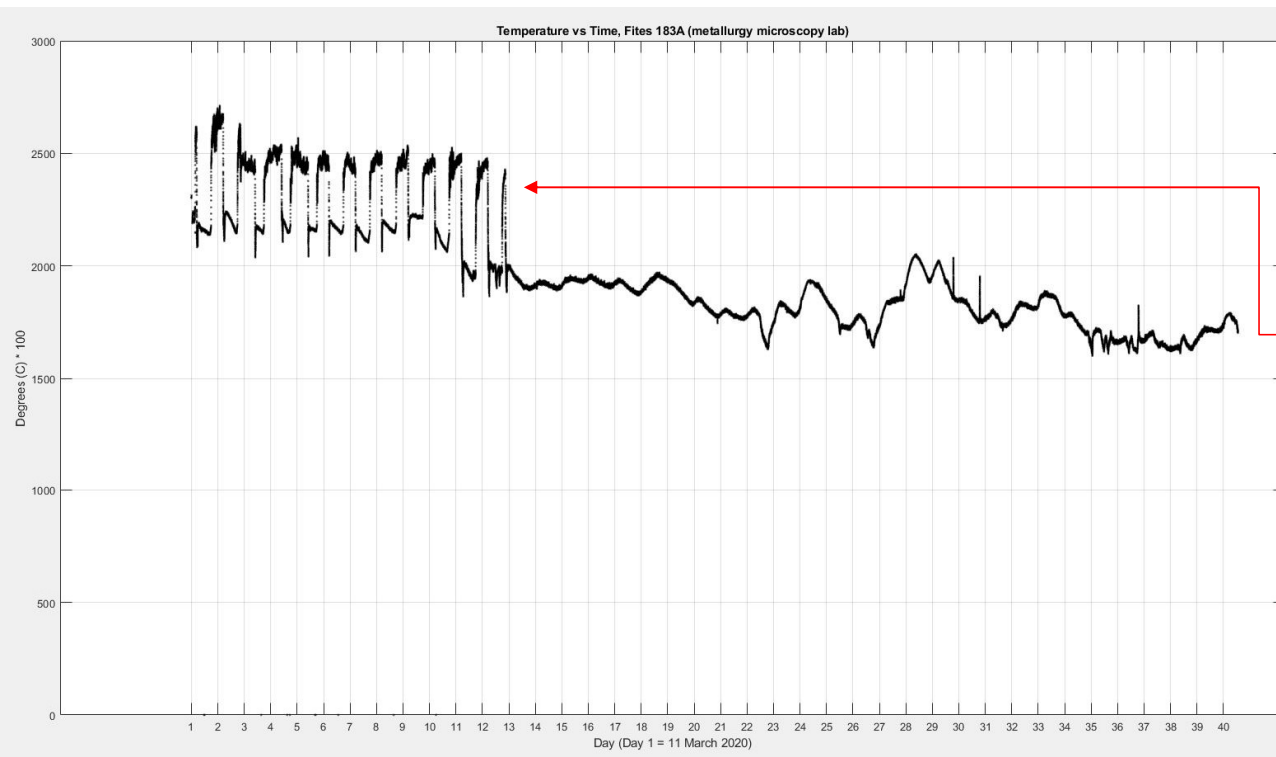
# What do we get?

- A LOT of data – over 500-thousand measurements!



```
565958 2020-04-20T06:24:24.808364 valpo/esp8266-rf24-mqtt/807d3a445518/msg {"channel":90,"time":"2020-04-20T06:24:23Z","from_addr":"2","to_addr":"0","type":0,"payload":"0200ac06c809dd117c8be3ca"}
565959 2020-04-20T06:24:33.735976 valpo/esp8266-rf24-mqtt/807d3a4456a7/msg {"channel":90,"time":"2020-04-20T06:24:33Z","from_addr":"1","to_addr":"0","type":0,"payload":"010000000000cc12fc48fb40"}
565960 2020-04-20T06:24:34.809191 valpo/esp8266-rf24-mqtt/807d3a445518/msg {"channel":90,"time":"2020-04-20T06:24:33Z","from_addr":"2","to_addr":"0","type":0,"payload":"0200ac06cb09dd118cb2e3ca"}
565961 2020-04-20T06:24:43.735122 valpo/esp8266-rf24-mqtt/807d3a4456a7/msg {"channel":90,"time":"2020-04-20T06:24:43Z","from_addr":"1","to_addr":"0","type":0,"payload":"010000000000b7120c70fb40"}
565962 2020-04-20T06:24:44.810047 valpo/esp8266-rf24-mqtt/807d3a445518/msg {"channel":90,"time":"2020-04-20T06:24:43Z","from_addr":"2","to_addr":"0","type":0,"payload":"0200ac06cb09dd119cd9e3ca"}
565963 2020-04-20T06:24:53.734118 valpo/esp8266-rf24-mqtt/807d3a4456a7/msg {"channel":90,"time":"2020-04-20T06:24:53Z","from_addr":"1","to_addr":"0","type":0,"payload":"010000000000cc121c97fb40"}
565964 2020-04-20T06:24:54.812396 valpo/esp8266-rf24-mqtt/807d3a445518/msg {"channel":90,"time":"2020-04-20T06:24:53Z","from_addr":"2","to_addr":"0","type":0,"payload":"0200ab06cb09b711ad00e4ca"}
565965 2020-04-20T06:25:03.733963 valpo/esp8266-rf24-mqtt/807d3a4456a7/msg {"channel":90,"time":"2020-04-20T06:25:03Z","from_addr":"1","to_addr":"0","type":0,"payload":"010000000000b7122dbefb40"}
565966 2020-04-20T06:25:04.813982 valpo/esp8266-rf24-mqtt/807d3a445518/msg {"channel":90,"time":"2020-04-20T06:25:03Z","from_addr":"2","to_addr":"0","type":0,"payload":"0200ab06ca09b711bc27e4ca"}
```

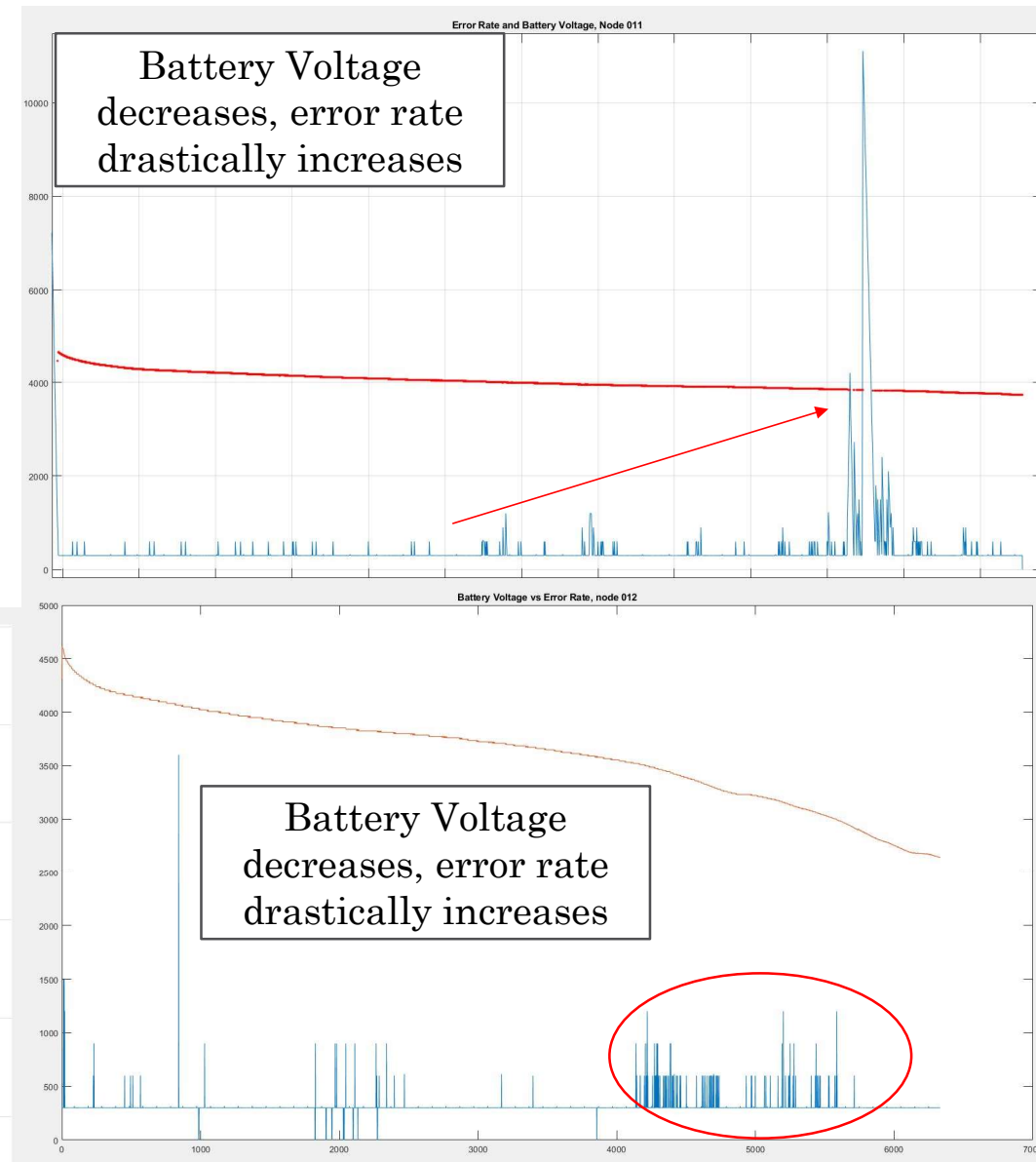
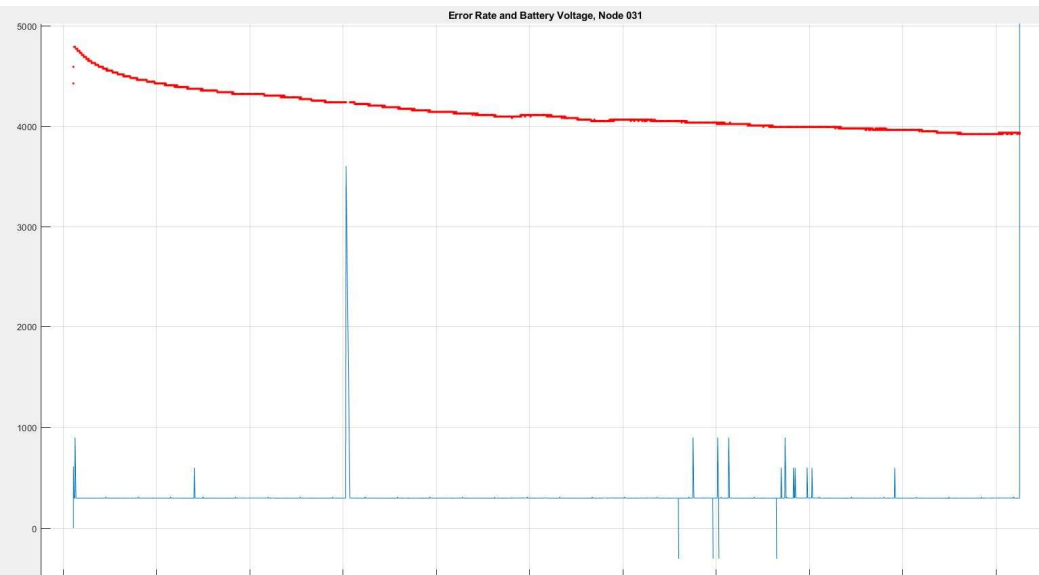
# What do we find?



- Due to online courses, unable to get on-campus to measure organ
- We can observe the effects of online courses directly
- Announcement of online courses directly coincides with 5-degree cooling in Fites

# Transmission Error Rate and Battery Voltage

- Plot shows time between transmissions
  - Programmed to be once every 5 minutes
  - As batteries lose charge, devices lose effectiveness
  - Blue spikes indicate failed messages



# Trial 1 vs Trial 2 – Battery Life

- Reducing sample rate by 80% only increases battery life by 39%
  - Indicates that idling itself is very resource-intensive
  - Optimizing sleep is key for longevity
- Trial 1: 1-minute sleep time
  - ~23,000 packets per lifetime, ~16 days
- Trial 2: 5-minute sleep time
  - 6433 packets per lifetime, ~22.3 days