

The Great Lakes Entomologist

Volume 28
Numbers 3 & 4 -- Fall/Winter 1995 *Numbers 3 &
4 -- Fall/Winter 1995*

Article 9

January 1995

A Michigan Record for *Clytus Marginicollis* (Coleoptera: Cerambycidae: Clytini)

James E. Zablotny
Michigan State University

Follow this and additional works at: <https://scholar.valpo.edu/tgle>



Part of the [Entomology Commons](#)

Recommended Citation

Zablotny, James E. 1995. "A Michigan Record for *Clytus Marginicollis* (Coleoptera: Cerambycidae: Clytini)," *The Great Lakes Entomologist*, vol 28 (3)
DOI: <https://doi.org/10.22543/0090-0222.1889>
Available at: <https://scholar.valpo.edu/tgle/vol28/iss3/9>

This Peer-Review Article is brought to you for free and open access by the Department of Biology at ValpoScholar. It has been accepted for inclusion in The Great Lakes Entomologist by an authorized administrator of ValpoScholar. For more information, please contact a ValpoScholar staff member at scholar@valpo.edu.

A MICHIGAN RECORD FOR *CLYTUS MARGINICOLLIS*
(COLEOPTERA: CERAMBYCIDAE: CLYTINI)James E. Zablotny¹

Clytus marginicollis Castlenau and Gory is a small, rarely collected clytine cerambycid endemic to coniferous forests of Eastern North America (Knull 1943, Linsley 1964). Gosling (1973) did not mention any records for it in his survey of Michigan cerambycids. Knull (1943) reports that this species probably occurs in Ohio but he had seen no specimens to confirm its presence.

With a standard sweep net, I collected a single specimen on 19 May 1985 and two specimens on 15 May 1986 at the Michigan State University tree dump in Lansing Township, Ingham County Michigan. They were sunning themselves on freshly cut pine and hardwood branches prior to capture. One of the 1986 specimens has been deposited in the MSU Insect Collection.

Clytus marginicollis is similar to the ubiquitous *C. ruricola* (Olivier), but is more robust in appearance. The pale yellow antemedian pubescent band of *C. marginicollis* is oblique and arcuate while *C. ruricola* possesses a U-shaped pubescent band (Figure 1). Unlike the anthophilous *C. ruricola*, *C. marginicollis* has never been recorded feeding on pollen or nectar. Also, while *C. ruricola* oviposits on rotten hardwood logs, *C. marginicollis* relies on windblown or freshly cut pine branches for oviposition sites (Linsley, 1964) and additional records should be found near cultivated and wild *Pinus* species. This species' use of recently cut or windthrown small pine branches suggests that its larvae have minimal or no economic impact on cut pine timber or cultivated nursery stock.

Along with *Phymatodes amoenus* (Say), *Megacyllene caryae* (Gahan), and *Cyrtophorus verrucosus* (Olivier), *C. marginicollis* is one of the first cerambycids to appear in the spring. Its early appearance may account in part for its uncommonly collected status.

Gosling (1973) and Gosling et al. (1976) compiled a comprehensive list of Michigan's cerambycid fauna and expected additional records from the southwestern Lower Peninsula and Western Upper Peninsula. I am pleased to report that Michigan's 226th cerambycid species was not discovered in those boundary counties but in a highly urbanized area of Ingham County. Even though cerambycid beetles have been extensively studied, further work is still needed to discover additional species and to enhance distribution records for those species found within the state.

ACKNOWLEDGMENTS

I thank Beth Bishop, Catherine Bristow, and Fred Stehr for their written comments and Jan Eschbach for assistance with computer graphics. I also thank Bob Androw for identifying the specimens.

¹Center for Insect Diversity Study, Department of Entomology, Michigan State University, East Lansing, MI 48824-1115.

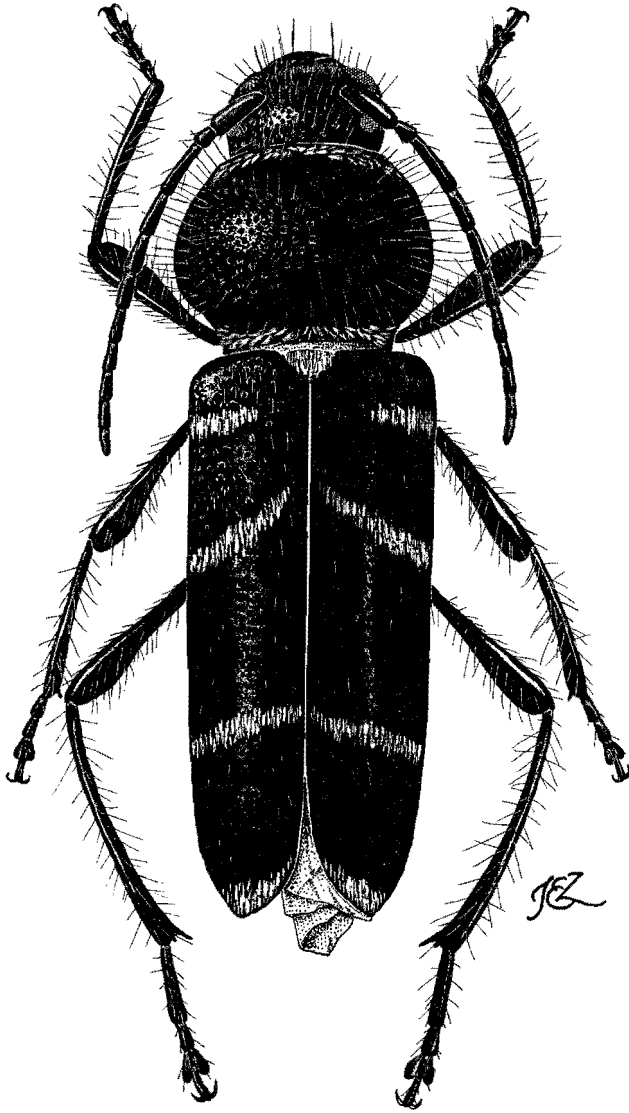


Figure 1. Habitus of *Clytus marginicollis* Castelnau and Gory.

LITERATURE CITED

- Gosling, D. C. L. 1973. An annotated list of the Cerambycidae of Michigan (Coleoptera) Part I, Introduction and the subfamilies Parandrinae, Prioninae, Spondylinae, Asemolinae, and Cerambycinae. *The Great Lakes Entomol.* 6(3):65-84.
- Gosling, D. C. L. and N. M. Gosling. 1976. An annotated list of the Cerambycidae of Michigan (Coleoptera) Part II, the subfamilies Lepturinae and Lamiinae. *The Great Lakes Entomol.* 10(1):1-37.
- Knull, J. N. 1946. The long-horned beetles of Ohio. *Ohio Biol. Surv., Bull.* 39:133-354.
- Linsley, E. G. 1964. The Cerambycidae of North America, Part V. Taxonomy and classification of the subfamily Cerambycinae, tribes Callichromini through Ancylocerini. *Univ. Calif. Publ. in Entomol.* 22:164-171.